

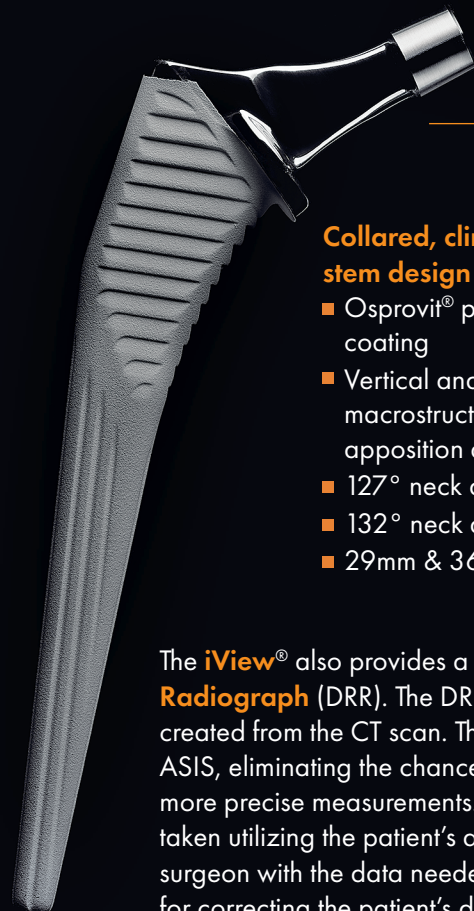
CORDERA™ MATCH

In true Conformis® fashion, a Cordera® Match hip can be done with just one reusable instrument tray. A second is needed for Direct Anterior Approach offset instrumentation.

Cordera™ Match is developed for use with the following Cordera™ Hip Cup, Liners and Stem:

36mm heads first available with 50mm Cordera™ cups

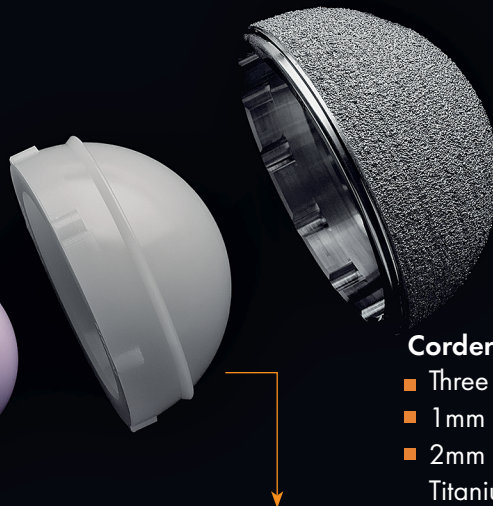
- CoCr or BIOLOX® delta ceramic
- 28, 32, 36 & 40mm



Collared, clinically proven stem design

- Osprovit® plasma spray HA coating
- Vertical and horizontal macrostructures to promote bone apposition and stability
- 127° neck angle in sizes 10-16
- 132° neck angle in sizes 10-13
- 29mm & 36.5mm neck lengths

The iView® also provides a **Digitally Reconstructed Radiograph (DRR)**. The DRR is a simulated full pelvis image created from the CT scan. The image is aligned parallel to the ASIS, eliminating the chance of a tilted pelvis thus providing more precise measurements. Leg length measurements are then taken utilizing the patient's anatomical landmarks to provide the surgeon with the data needed to help determine the best plan for correcting the patient's discrepancy.



Cordera™ Acetabular Cup

- Three holes
- 1mm increment diameter
- 2mm press-fit with proven Titanium Plasma Technology

Vitamin E XLPE liners available in:

- **Standard:** Available in sizes 0, +2 and +4 mm
*iView is planned to a +2 liner
- **Lipped (4mm):** available in 0 and +2 mm
- **Face Changing (10 degree):** available in 0 and +2 mm

